



MRS-134

- Feature**
- MRS-134 is the multi-channel MR sensor of the detection width 62mm.
 - Elements are arranged onto the same straight line to detect safety thread of the bill securely. It can get output steadily from the sensor by the width of 62mm.

Absolute Maximum Rating (Ta=25C)

Item	Symbol	Standard Value	Unit
Excitation,Maximum	V _{a max}	5.5	V
Withstand Voltage	V _I	100	V
Allowable Loss	P _D	170	mW
Operation Environmental Temperature	T _{opg}	-30 ~ +85	°C
Preserved Environmental Temperature	T _{stg}	-30 ~ +85	°C

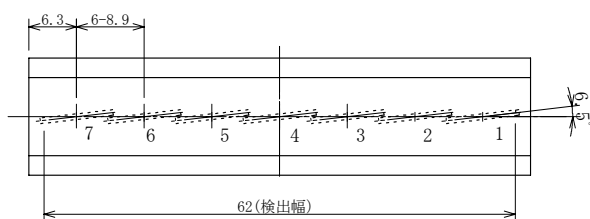
Electrical Property (Ta=25C)

Item	Symbol	Condition	min.	Typ.	Max.	Unit
Output voltage	V _{OUT}	V _a =5V ^{*1}	0.16		0.42	mVrms
Resistance balance	V _B	I=1mA ^{*2}			2	
Input resistance	R	I=1mA	180		700	Ω
Voltage Noise	V _{NW}	V _a =5V			50	μV _{P-P}
Piezo Noise	V _{NP}	V _a =5V,press=10g			300	μV _{P-P}
Magnetic Flux Density	B			1.0 (S Pole)		T
Detection Width	W	9mm×7ch		62		mm

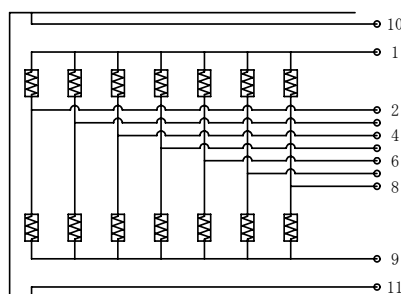
*1 Input uses the magnetic flux which occurs when it is charged with current of 50Hz, 100mA(rms) in the line of φ 0.1mm.

*2 max(V_{OUT(1-7)})/min(V_{OUT(1-7)})

Elements arrangement figure

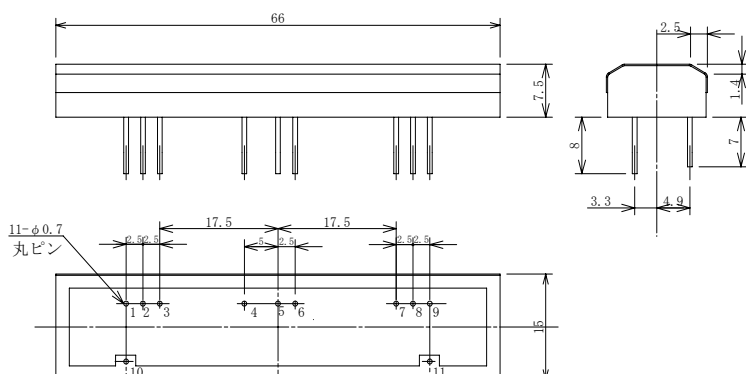


Internal Circuit Figure



Pin No.	Symbol	Function
1	V _a	Power Input
9	GND	GND
2 / 3 / 4 / 5 / 6 / 7 / 8	V _{OUT1-7}	Output
10 / 11	FG	CGND

Contour Measure Figure



The product specifications and the appearance are possibility of changing without notice.